

Key Principles for Assessing English Language Learners

Based on
The ESL/ELL Teacher's Survival Guide, 2nd Ed.
by Larry Ferlazzo & Katie Hull Sypnieski

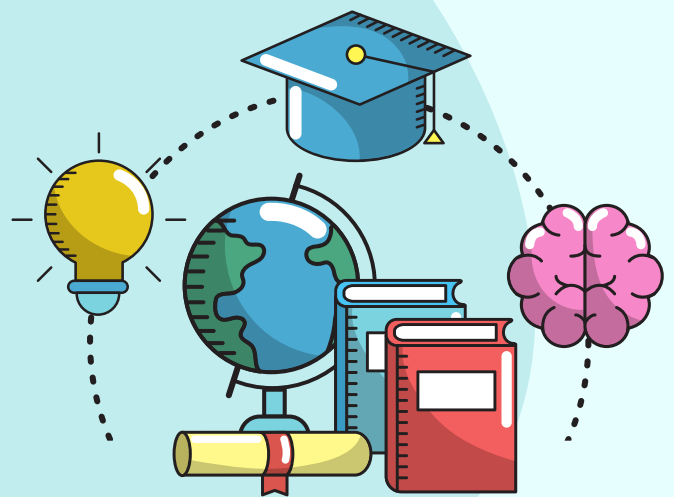


BE DATA-INFORMED, NOT DATA-DRIVEN

Data-informed teachers use assessment data to reflect on their practice, identify areas to monitor & adjust, and seek out resources & knowledge needed to make changes.

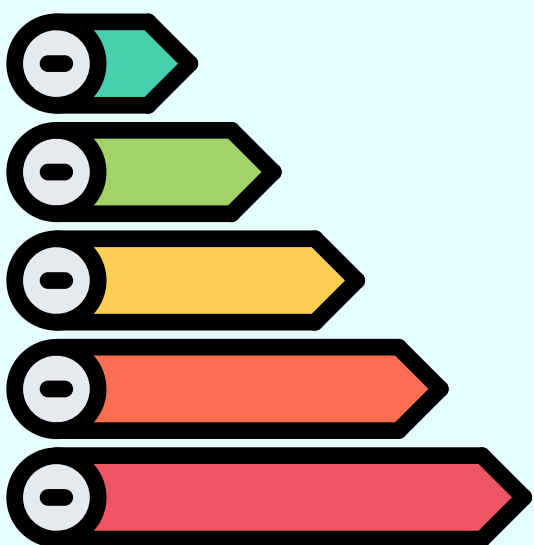
ASSESS KNOWLEDGE & LANGUAGE SEPARATELY

Test modifications must be made so that limitations in language do not interfere with ELL's test performance.



ASSESS STUDENTS ACCORDING TO THEIR PROFICIENCY LEVEL

Know your students, identify their academic strengths & challenges and their proficiency levels so they're not assessed based on previous standardized test scores.



INVOLVE STUDENTS IN SELF-ASSESSMENT

When students are asked to evaluate their own progress, they feel more ownership of the learning process and are better able to identify their own learning goals.

